

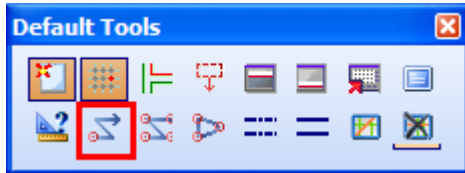
# Web update of DDS-CAD Architect & Construction May 2010

---

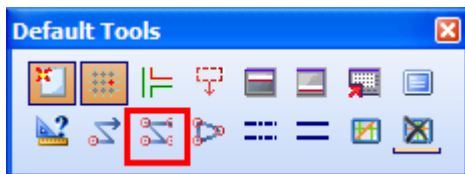
Update has been processed with priority on editing reported problems.

---

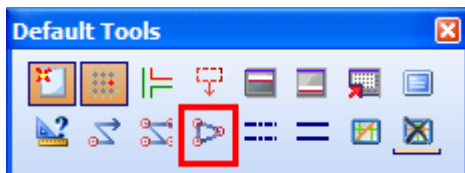
## Polyline and Dynamic line



**Dynamic line** is reinstalled as we know it.



**Polyline** is updated. A field where to indicate if the contour line should be visible in 3D/section has also been added. Note that you can cut behind the line (ED).



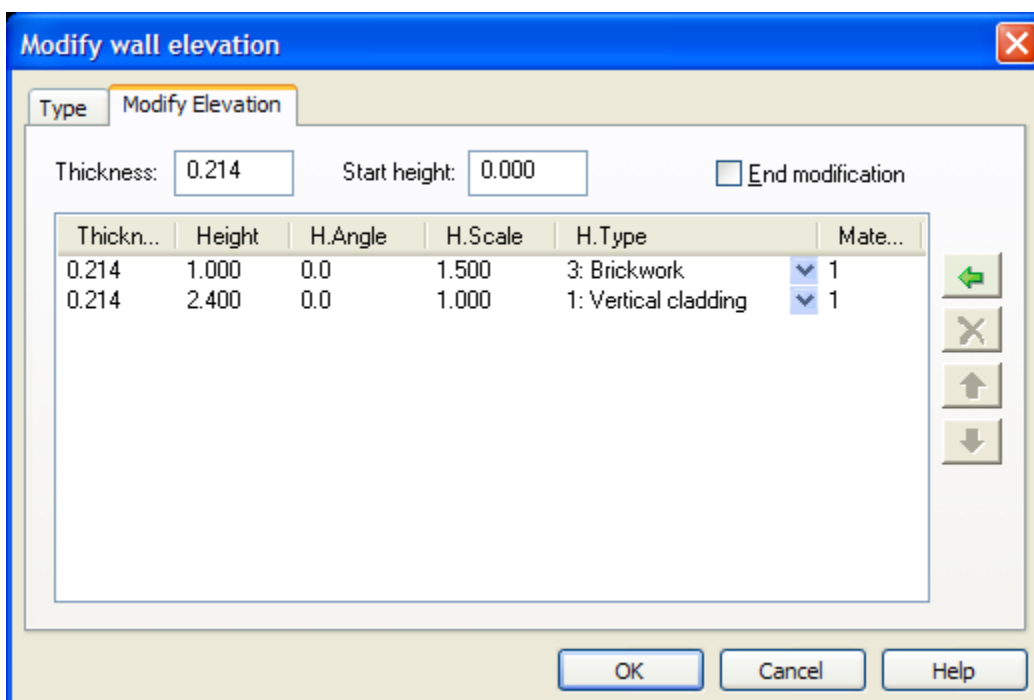
**Polyline – Closed** is added as a separate option. Via this you can enter a closed contour – polygon – that can be marked to cut behind the area. Here you can add material selection for rendering the area, the area can be calculated – i.e. the area is calculated and the number of m<sup>2</sup> can be written in the drawing. The area can also be hatched. With indication of invisible line in the drawing, this is displayed as a light grey line which will not be included when printing.

---

## DDS-CAD Architect

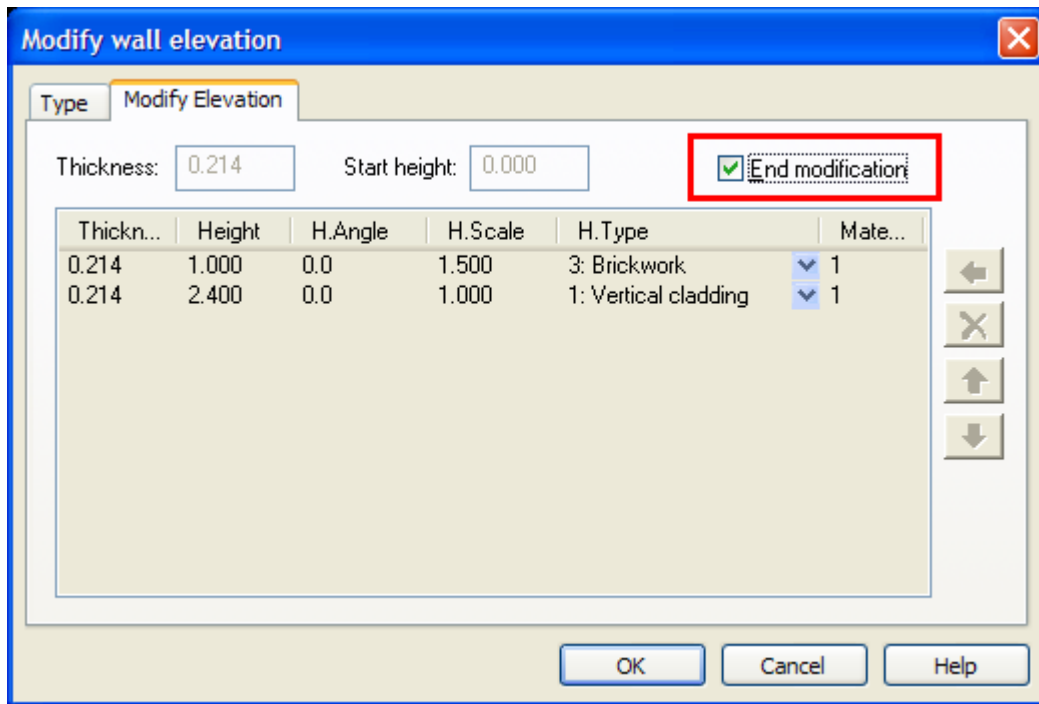
### End modification in wall elevation

An option has been added of returning to the original elevation when using **Modify elevation** only by one single indication – without having to specify the original hatch in elevation.



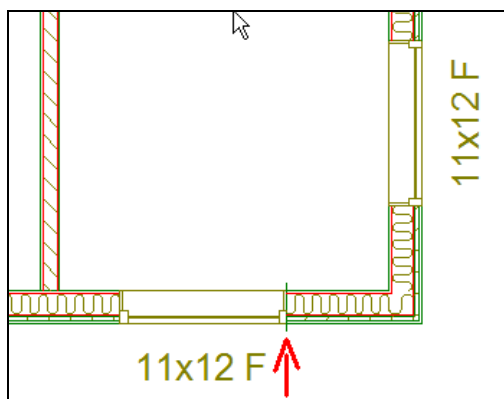
Enter specification for new layers in elevation by inserting **Modify elevation**.

When you want to return to the original elevation type, indicate in the field for **End modification**.

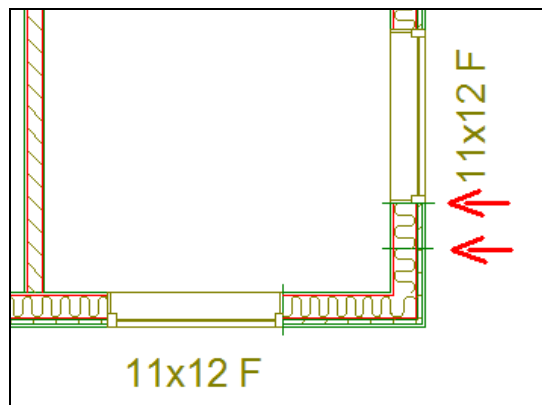


### Modify elevation around a corner

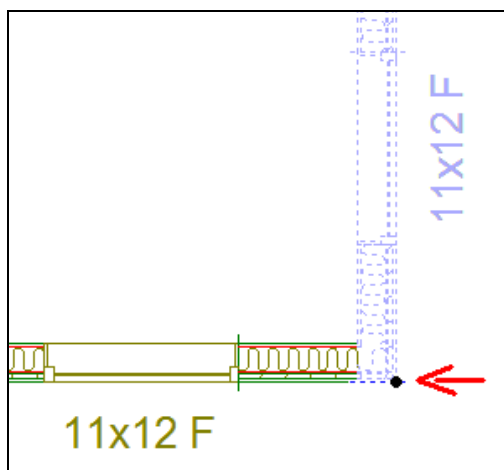
How to proceed to get a perfect modification in elevation around a corner.



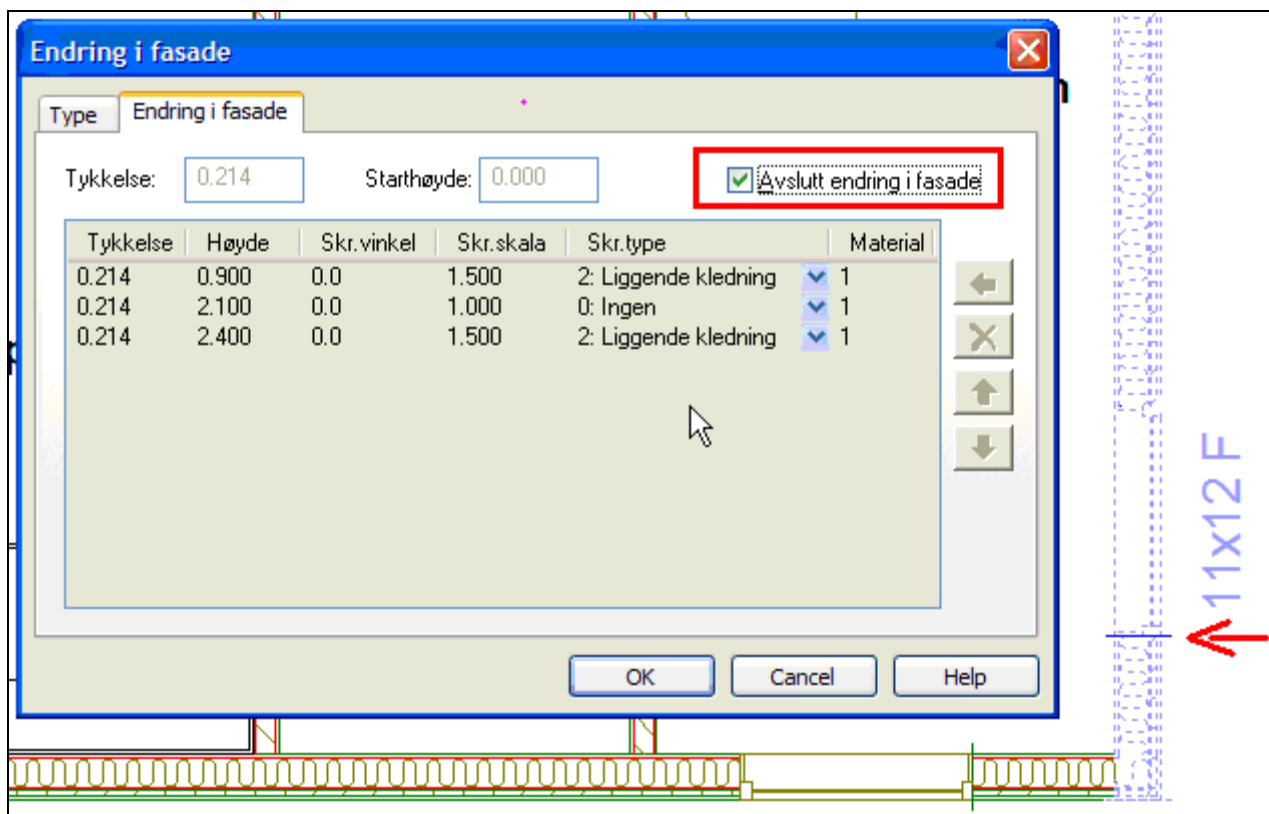
Indicate current wall. click the right mouse button and select Modify elevation. Position the object and enter values for each single layer to be included



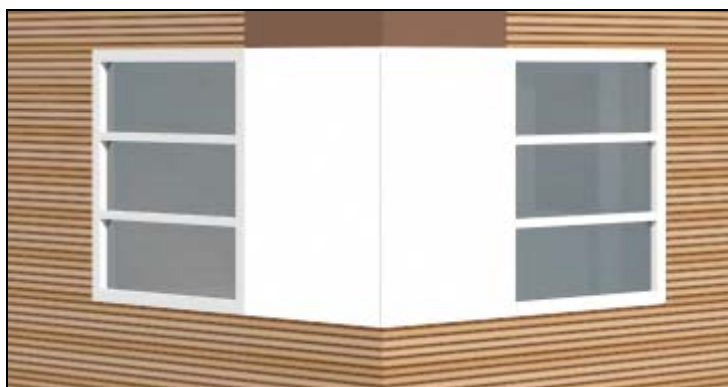
Indicate the first object to modify, click the right button and select Insert identical copy. Insert one "right around the corner" and the other where to end the modification.



Indicate the "around the corner" and move it to the utmost corner.



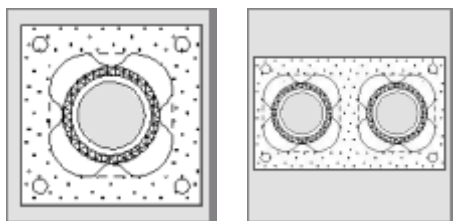
Indicate the last one and edit in the appurtenant dialogue box by indicating **End modification**.



## DDS-CAD Architect

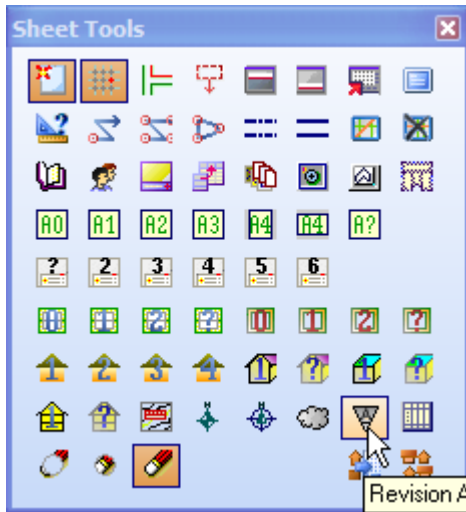
### Chimney types

Two new chimney types have been included – **single tube and twin tubes Leca Venti**.



## DDS-CAD Architect

### Revision arrow



A symbol defining a revision arrow in tools for sheet has been added.

---

## DDS-CAD Construction

### Connection point

"Extended connection point for joist perpendicular on wall" now handles larger joist widths.

---

## DDS-CAD Construction

### Export to Hundegger saw

- Export to Hundegger saw will also include decimals by defined angles.
  - Export to Hundegger saw will consider and sort solidity class.
-